

Allen Electric Connector Sales, inc.

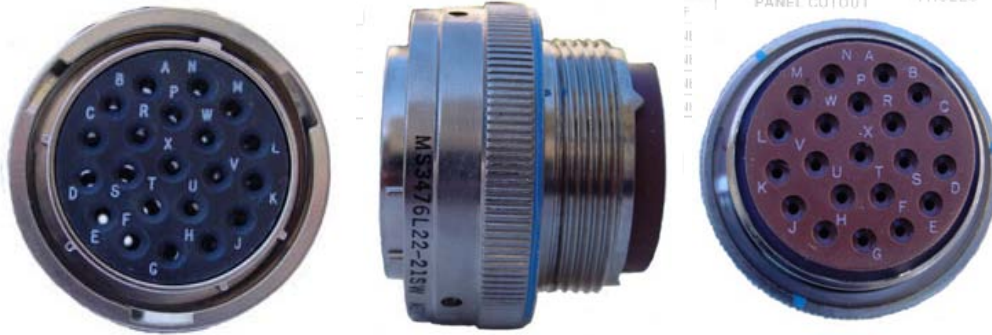


TM

MS3476 PLUG, BAYONET COUPLING, CLASS A, L, S, W

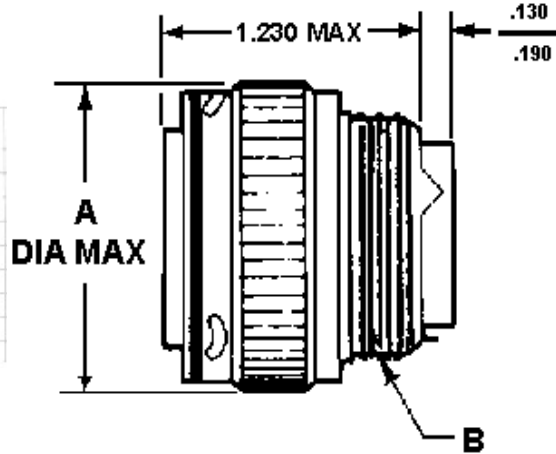
SHELL SIZE	A MAX	B ±.005	C ±.035	D ±.035	E MAX	F -0.015	G ±.010	H MAX	JH-LEAD 2A
8	.828	.554	.568	.120	1.275	.446	.062	.087	1/2-20 UNF
10	.954	.719	.585	.120	1.275	.446	.062	.087	5/8-24 UNEF
12	1.047	.872	.564	.120	1.275	.446	.062	.087	3/4-20 UNEF
14	1.141	.906	.969	.20	1.275	.446	.062	.087	7/8-20 UNEF
16	1.234	.968	1.115	.20	1.275	.446	.062	.087	1-20 UNEF
18	1.328	1.062	1.236	.20	1.275	.446	.062	.087	1 1/16-18 UNF
20	1.418	1.150	1.365	.20	1.275	.446	.062	.087	1 3/16-18 UNEF
22	1.528	1.250	1.486	.20	1.275	.446	.062	.087	1 5/16-18 UNEF
24	1.703	1.375	1.615	.27	1.275	.446	.062	.087	1 7/16-18 UNF

SHELL SIZE	A MAX	B ±.005	C ±.035
8	.828	.554	.568
10	.954	.719	.585
12	1.047	.872	.564
14	1.141	.906	.969
16	1.234	.968	1.115
18	1.328	1.062	1.236
20	1.418	1.150	1.365
22	1.528	1.250	1.486
24	1.703	1.375	1.615



SHELL SIZE	A MAX	B ±.005	C ±.035	D ±.035	E MAX	F -0.015	G ±.010	H MAX	JH-LEAD 2A
8	.828	.554	.568	.120	1.275	.446	.062	.087	1/2-20 UNF
10	.954	.719	.585	.120	1.275	.446	.062	.087	5/8-24 UNEF
12	1.047	.872	.564	.120	1.275	.446	.062	.087	3/4-20 UNEF
14	1.141	.906	.969	.20	1.275	.446	.062	.087	7/8-20 UNEF
16	1.234	.968	1.115	.20	1.275	.446	.062	.087	1-20 UNEF
18	1.328	1.062	1.236	.20	1.275	.446	.062	.087	1 1/16-18 UNF
20	1.418	1.150	1.365	.20	1.275	.446	.062	.087	1 3/16-18 UNEF
22	1.528	1.250	1.486	.20	1.275	.446	.062	.087	1 5/16-18 UNEF
24	1.703	1.375	1.615	.27	1.275	.446	.062	.087	1 7/16-18 UNF

SHELL SIZE	A MAX	B THREAD-2A
8	.782	1/2-20 UNF
10	.926	5/8-24 UNEF
12	1.043	3/4-20 UNEF
14	1.183	7/8-20 UNEF
16	1.305	1-20 UNEF
18	1.391	1 1/16-18 UNF
20	1.531	1 3/16-18 UNEF
22	1.656	1 5/16-18 UNEF
24	1.777	1 7/16-18 UNF



SHELL SIZE	A MAX	B ±.005
8	.828	.554
10	.954	.719
12	1.047	.872
14	1.141	.906
16	1.234	.968
18	1.328	1.062
20	1.418	1.150
22	1.528	1.250
24	1.703	1.375

SHELL SIZE	A MAX	B ±.005	C ±.035
8	.828	.554	.568
10	.954	.719	.585
12	1.047	.872	.564
14	1.141	.906	.969
16	1.234	.968	1.115
18	1.328	1.062	1.236
20	1.418	1.150	1.365
22	1.528	1.250	1.486
24	1.703	1.375	1.615

SHELL SIZE	A MAX	B ±.005	C ±.035	D ±.025	E MAX	F -0/+1	G ±0.10	H MAX	J
8	828	554	568						1H-14D 3A



SHELL SIZE	A MAX	B ±.005	C ±.035
8	828	554	568
9	885		
12	1047	812	864
14	1141	906	969
16	1234	986	1115
18	1328	1062	1236
20	1443	1150	1365
22	1578	1250	1485
24	1703	1375	1615

MILITARY PART NUMBERING SYSTEM

MS3476

L 22 - 21 S W

Polarization (Blank for normal, Alternate positions W, X, Y or Z)
Contact Style: P= Pins, S= Sockets, A= less Pins, B= less Sockets
Insert Arrangement: Per MIL-STD-1669
Shell Size: Even numbers 8 thru 24

Class:

- L** = Aluminum shell, electroless nickel finish
- A** = Aluminum shell, anodized finish, black (not applicable to MS3475)
- S** = Stainless steel, passivated
- W** = Aluminum shell, olive drab cadmium plated

- MS Number:** MS3470 Narrow flange receptacle
 MS3471 Cable connecting receptacle
 MS3472 Wide flange receptacle
 MS3474 Jam nut mount receptacle
 MS3475 RFI grounding Plug
 MS3476 Standard Plug

SHELL SIZE	A MAX	B ±.005	C ±.035	D ±.025	E MAX	F -0/+1	G ±0.10	H MAX	J
8	828	554	568						1H-14D 3A
9	885								
12	1047	812	864	120	1.275	446	062	087	3/4-20 UNF+
14	1141	906	969	20	1.215	446	062	087	7/8-20 UNF
16	1234	986	1115	20	1.215	446	062	087	1 1/16"-8 UNF
18	1328	1062	1236	20	1.275	5/2	094	212	1 3/16"-8 UNF
20	1443	1150	1365	20	1.275	5/2	094	212	1 5/16"-8 UNF
22	1578	1250	1485	20	1.275	5/2	094	212	1 7/16"-8 UNF
24	1703	1375	1615	27	1.275	5/2	094	212	1 7/16"-8 UNF

SHELL SIZE	A MAX	B ±.005	C ±.035
8	828	554	568
9	885		
12	1047	812	864
14	1141	906	969
16	1234	986	1115
18	1328	1062	1236
20	1443	1150	1365
22	1578	1250	1485
24	1703	1375	1615

For pricing and availability, please fill out our RFQ form

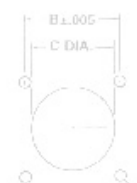
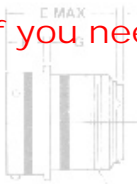


If you need any other information, please [E-Mail aecs@aecsinc.com](mailto:aecs@aecsinc.com)



phone (703) 425-3815 fax (703) 425-3814

We look forward to hearing from you!



H — MAX PANEL



H — MAX PANEL



D DIA 4 HOLES



D DIA 4 HOLES

SHELL SIZE	A MAX	B ±.005	C ±.035	D ±.025	E MAX	F -0/+1	G ±0.10	H MAX	J
8	828	554	568						1H-14D 3A
9	885								
12	1047	812	864	120	1.275	446	062	087	3/4-20 UNF+
14	1141	906	969	20	1.215	446	062	087	7/8-20 UNF
16	1234	986	1115	20	1.215	446	062	087	1 1/16"-8 UNF
18	1328	1062	1236	20	1.275	5/2	094	212	1 3/16"-8 UNF
20	1443	1150	1365	20	1.275	5/2	094	212	1 5/16"-8 UNF
22	1578	1250	1485	20	1.275	5/2	094	212	1 7/16"-8 UNF
24	1703	1375	1615	27	1.275	5/2	094	212	1 7/16"-8 UNF



A Woman Owned Small Business, CAGE Code 07BG6