

# Allen Electric Connector Sales, inc.



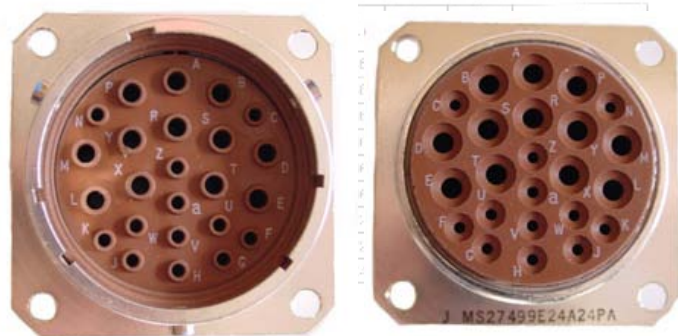
## MIL-DTL-38999 Series II

Shell Size	8	10	12	14	16	18	20	22	24
R	820	554	568	120	1,215	446	952	087	1,215
0	954	719	585	120	1,215	446	952	087	1,215
12	1,047	812	664	120	1,215	446	952	087	1,215
14	1,141	906	768	120	1,215	446	952	087	1,215
16	1,234	1000	872	120	1,215	446	952	087	1,215

SHELL SIZE	A MAX
8	820
10	954
12	1,047
14	1,141
16	1,234
18	1,328
20	1,423
22	1,518
24	1,703



SHELL SIZE	A MAX
8	820
10	954
12	1,047
14	1,141
16	1,234
18	1,328
20	1,423
22	1,518
24	1,703



SHELL SIZE	A MAX
8	820
10	954
12	1,047
14	1,141
16	1,234
18	1,328
20	1,423
22	1,518
24	1,703

The MIL-DTL-38999 Series II connectors are bayonet coupling subminiature configuration with a low profile design using a shorter socket contact than used by Series I and III. This series is used for instrumentation applications where space is at a premium. Series II is not scoop proof. Series II is available in nine shell sizes with five receptacle configurations and standard or RFI plugs. 54 insert arrangements using 3 to 128 contacts terminating wire gauge sizes 28 through 12. The hard plastic socket interface features the chamfered conical entry that aids in proper contact mating. The fluorosilicone interfacial seal has conical risers around each pin contact that compress into the socket interface, assuring the seal of the mating surface. Cadmium over Nickel, Anodic and electroless nickel finishes are available for aluminium shells.

### GENERAL SPECIFICATIONS

Contacts: Sizes 22D, 20, 16, and 12 gauge per MIL-C-39029	Operating Temperature Range: Listed under Part Numbering System Below
Environmental Fluorosilicone Elastomers	Voltage Service Rating: M = 400 v, I = 600 v, II = 900 v
Polarization: Locksmith Keying	Contact Current Rating: Size 22D: 5 amps, Size 20: 7.5 amps, Size 16: 13 amps, Size 12: 23 amps

# MILITARY PART NUMBERING SYSTEM

**MS27474**

**T**

**22**

**F**

**35**

**P**

**A**

- Polarization (not required for normal)
- Contact Style (P for Pin, S for Socket)
- Insert Arrangement (Refer to MIL-C-38999 Insert Arrangements)
- Finish:
  - B= Aluminum, olive drab cadmium over nickel -65 C to +175C
  - C= Aluminum, Anodic (Non-Conductive) -65 C to +200 C
  - F= Aluminum, electroless nickel, -65 C to +200 C
- Shell Size: (even numbers only, 8 thru 24)
- Class:
  - T= Environmental with accessory threads and teeth (with exception of box mount version)
  - E= Environmental (box mount versions only)
- MS Number
  - MS27472= wall mount flange receptacle
  - MS27473= standard plug
  - MS27474= jam nut mount receptacle
  - MS27499= box mount receptacle
  - MS27508= box mount flange receptacle
  - MS27497= back panel wall mount receptacle
  - MS27484= RFI Plug
  - MS27513= box mount flange long grommet receptacle

[Series II Polarization & Shell Keying](#)

[Series II Panel Cut-Out Dimensions](#)

[Series I & II Strain Reliefs](#)

[MS27473 Series II Standard Plug](#)

[MS27484 Series II Plug with RFI Grounding](#)

[MS27472 Series II Wall Mounting Flange Receptacle](#)

[MS27497 Series II Back Panel Wall Mounting Flange Receptacle](#)

[MS27474 Series II Jam Nut Receptacle](#)

[MS27499 Series II Back Box Mount Flange Receptacle](#)

[MS27508 Series II Back Panel Box Mount Flange Receptacle](#)

[MS27513 Series II Long Grommet Box Mount Flange Receptacle](#)

SHELL SIZE	MAX	±.005	±.005	±.005	MAX	-0° C	+010	MAX	TH-LEAD 2A
8	.820	.554	.568	.120	1.215	.446	.052	.087	1/8-20 UNF
10	.954	.719	.685	.120	1.215	.446	.052	.087	5/16-24 UNEF
12	1.047	.806	.772	.120	1.215	.446	.067	.087	3/4-20 UNEF
14	1.141	.906	.872	.120	1.215	.446	.067	.087	7/8-20 UNEF
16	1.234	.988	1.115	.120	1.215	.446	.067	.087	1-20 UNEF
18	1.328	1.082	1.236	.120	1.215	.446	.067	.087	1 1/16-18 UNF
20	1.433	1.180	1.365	.120	1.275	.522	.094	.212	1 3/16-18 UNF
22	1.528	1.280	1.485	.120	1.275	.522	.094	.212	1 5/16-18 UNF
24	1.703	1.375	1.615	.120	1.275	.522	.094	.212	1 7/16-18 UNF

SHELL SIZE	MAX
8	.820
10	.954
12	1.047
14	1.141
16	1.234
18	1.328
20	1.433
22	1.528
24	1.703



For pricing and availability, please fill out our RFQ form



SHELL SIZE	A	B	C	D	E	F	G	H	J
8	.820	.554	.568	.120	1.215	.446	.052	.087	
10	.954	.719	.685	.120	1.215	.446	.052	.087	
12	1.047	.806	.772	.120	1.215	.446	.067	.087	
14	1.141	.906	.872	.120	1.215	.446	.067	.087	
16	1.234	.988	1.115	.120	1.215	.446	.067	.087	
18	1.328	1.082	1.236	.120	1.215	.446	.067	.087	
20	1.433	1.180	1.485	.120	1.275	.522	.094	.212	1 5/16-18 UNF
22	1.528	1.280	1.615	.120	1.275	.522	.094	.212	1 7/16-18 UNF

If you need any other information, please [E-Mail aecs@aecsinc.com](mailto:aecs@aecsinc.com)

phone (703) 425-3815 fax (703) 425-3814

We look forward to hearing from you!



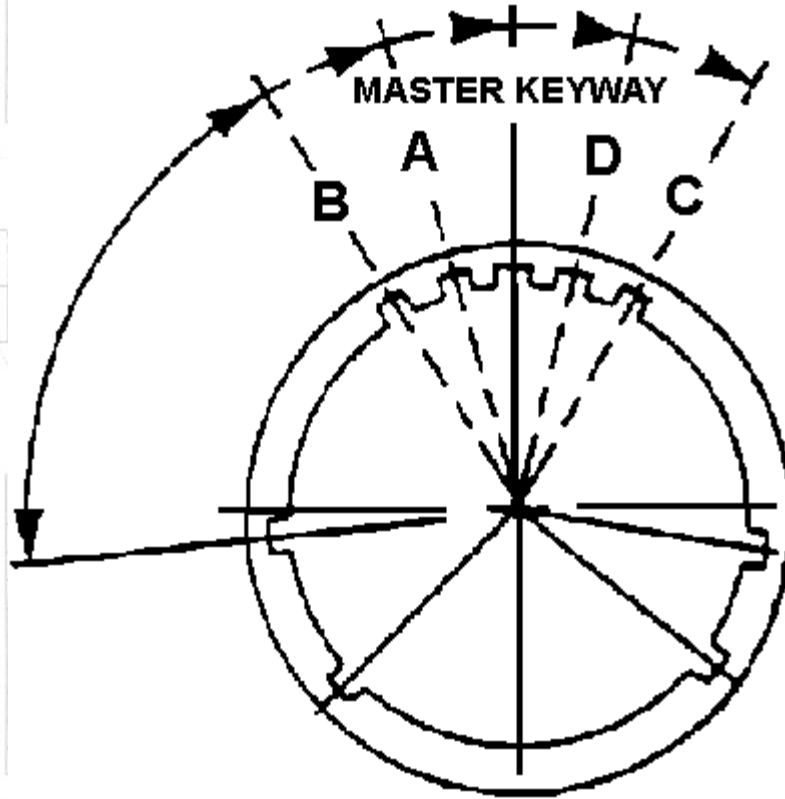


# Allen Electric Connector Sales, inc.



## MIL-DTL-38999 SERIES II LOCKSMITH KEYING POLARIZATION

(MACHINED INTO SHELL)



SHOWN IS THE FACE OF THE RECEPTACLE , PLUG ANGLE IS OPPOSITE

### SHELL KEYING

SHELL SIZE	ANGLES IN DEGREES				
	NORMAL	A	B	C	D
8	100	182			118
10	100	86	72	128	114
12	100	80	68	132	120
14	100	79	66	134	121
16	100	82	70	130	118
18	100	82	70	130	118
20	100	82	70	130	118





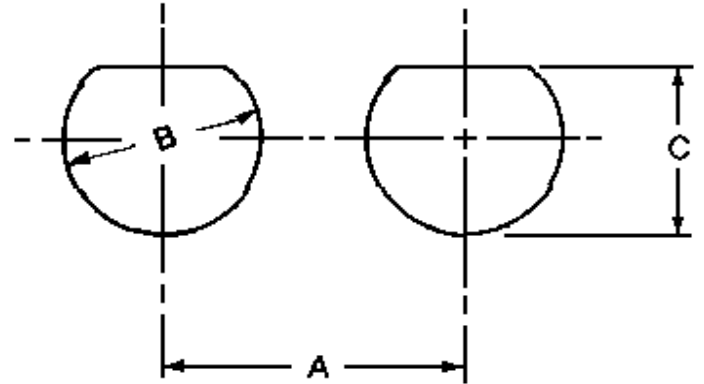
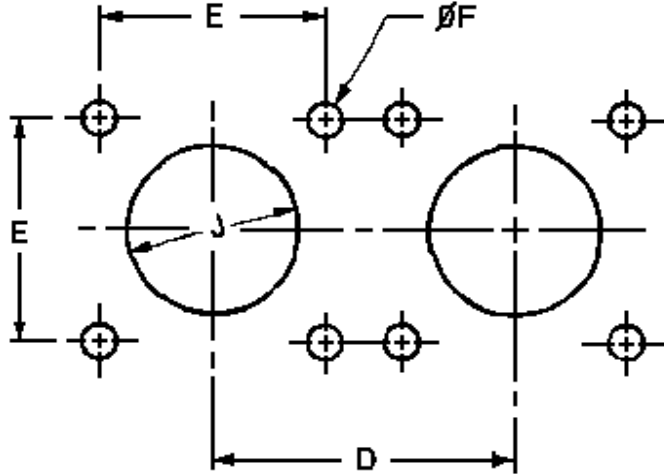
# Allen Electric Connector Sales, inc.



## MIL-DTL-38999 SERIES II PANEL CUT-OUT DIMENSIONS

FLANGE MOUNT

JAM MOUNT



SHELL SIZE	A MIN	B +.010-.000	C +.000-.010	D MIN	E	F +.005
8	1.299	.884	.830	.846	.594	.128
10	1.417	1.007	.955	.984	.719	.128
12	1.575	1.134	1.084	1.063	.812	.128
14	1.693	1.259	1.208	1.181	.906	.128
16	1.850	1.384	1.333	1.299	.969	.128
18	2.008	1.507	1.459	1.437	1.062	.128
20	2.126	1.634	1.576	1.535	1.156	.128
22	2.362	1.759	1.701	1.673	1.250	.128
24	2.520	1.864	1.826	1.811	1.375	.154

For pricing and availability, please fill out our RFO form



If you need any other information, please E-Mail [aecs@aecsinc.com](mailto:aecs@aecsinc.com)





# Allen Electric Connector Sales, inc.



TM

## MS27473 SERIES II STANDARD PLUG

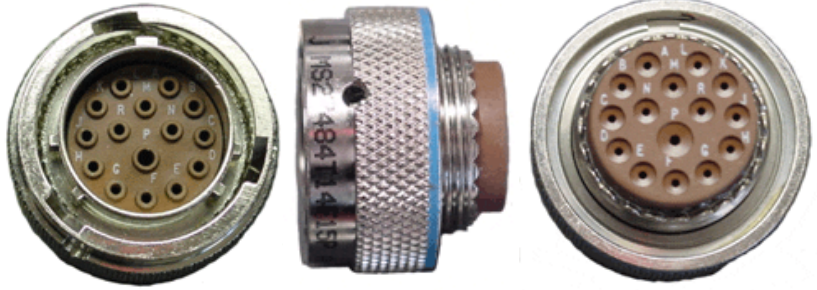
SHELL SIZE	A MAX	B ±.005	C ±.035	D ±.035	E MAX	F -0.0	G +0.10	H MAX	J TH-HEAD 2A
8	.828	.554	.568	.120	1.215	.445	.052	.087	62-20 UNF
10	.954	.719	.585	.120	1.215	.445	.052		



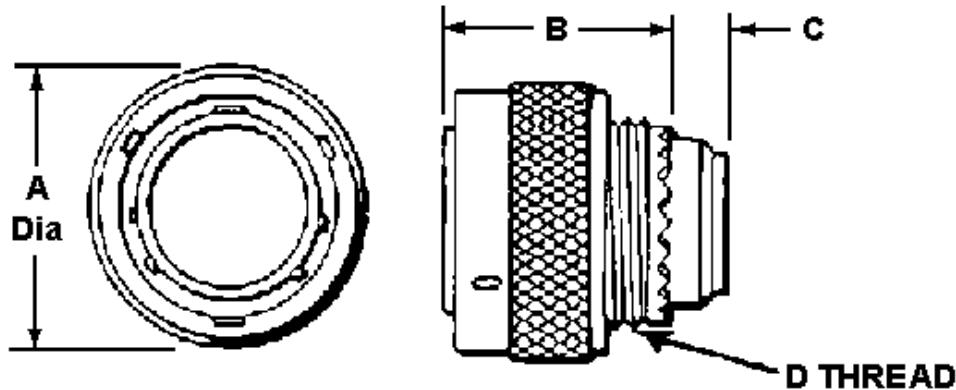
SHELL SIZE	A MAX
8	.828
10	.954
12	1.047
14	1.141
16	1.234
18	1.328
20	1.423
22	1.518
24	1.613

## MS27484 SERIES II PLUG WITH RFI GROUNDING

SHELL SIZE	A MAX	B ±.005	C ±.035	D ±.035	E MAX	F -0.0	G +0.10	H MAX	J TH-HEAD 2A
8	.828	.554	.568	.120	1.215	.445	.052	.087	62-20 UNF
10	.954	.719	.585	.120	1.215	.445	.052		



SHELL SIZE	A MAX
8	.828
10	.954
12	1.047
14	1.141
16	1.234
18	1.328
20	1.423
22	1.518
24	1.613



SHELL SIZE	D THREAD CLASS 2A	A DIA		B		C	
		INCH	MM	INCH	MM	INCH	MM
8	62-20 UNF	0.828	21.04	0.554	14.07	0.568	14.43
10	62-20 UNF	0.954	24.24	0.719	18.27	0.585	14.81
12	62-20 UNF	1.047	26.70	0.719	18.27	0.585	14.81
14	62-20 UNF	1.141	29.00	0.719	18.27	0.585	14.81
16	62-20 UNF	1.234	31.30	0.719	18.27	0.585	14.81
18	62-20 UNF	1.328	33.74	0.719	18.27	0.585	14.81
20	62-20 UNF	1.423	36.16	0.719	18.27	0.585	14.81
22	62-20 UNF	1.518	38.56	0.719	18.27	0.585	14.81
24	62-20 UNF	1.613	41.03	0.719	18.27	0.585	14.81

8	.4375-28 UNEF	.745	18.92	.750	19.05	.140	3.56
10	.5625-24 UNEF	.859	21.82	.750	19.05	.140	3.56
12	.6875-24 UNEF	1.023	25.98	.750	19.05	.140	3.56
14	.8125-20 UNEF	1.141	28.98	.750	19.05	.140	3.56
16	.9375-20 UNEF	1.275	32.39	.750	19.05	.140	3.56
18	1.0625-18 UNEF	1.406	35.71	.750	19.05	.140	3.56
20	1.1875-18 UNEF	1.525	38.74	.750	19.05	.140	3.56
22	1.3125-18 UNEF	1.641	41.68	.750	19.05	.140	3.56
24	1.4375-18 UNEF	1.760	44.70	.750	19.05	.140	3.56

- [MIL-DTL-38999 Insert and Contact Identification](#)
- [MIL-DTL-38999 Insert Arrangements](#)
- [MIL-DTL-38999 Contacts, Tooling, Wire Sizes, Sealing Plugs](#)
- [Series II Polarization & Shell Keying](#)
- [Series I & II Strain Reliefs](#)

SIZE	A	B	C	D	E	F	G	H	J
MAX	.005	±.005	-.003	MAX	-.015	+.010	MAX	1H-1.5D 3A	

### MILITARY PART NUMBERING SYSTEM

**MS27473**

**T**

**18**

**B**

**35**

**S**

**A**

- Polarization (not required for normal)**
- Contact Style (P for Pin, S for Socket)**
- Insert Arrangement (Refer to MIL-C-38999 Insert Arrangements)**
- Finish:**
  - B= Aluminum, olive drab cadmium over nickel -65 C to +175C**
  - C= Aluminum, Anodic (Non-Conductive) -65 C to +200 C**
  - F= Aluminum, electroless nickel, -65 C to +200 C**
- Shell Size: (even numbers only, 8 thru 24)**
- Class:**
  - T= Environmental with accessory threads and teeth (with exception of box mount version)**
  - E= Environmental (box mount versions only)**
- MS Number**
  - MS27472= wall mount flange receptacle**
  - MS27473= standard plug**
  - MS27474= jam nut mount receptacle**
  - MS27499= box mount receptacle**
  - MS27508= box mount flange receptacle**
  - MS27497= back panel wall mount receptacle**
  - MS27484= RFI Plug**
  - MS27513= box mount flange long grommet receptacle**

22	1.578	1.450	1.485	120	1.275	5/2	.094	212	1.5716-18 UNEF
24	1.703	1.375	1.615	147	1.275	1/2	.094	212	1.7116-18 UNEF

For pricing and availability, please fill out our RFQ form



If you need any other information, please [E-Mail aecs@aecsinc.com](mailto:aecs@aecsinc.com)

phone (703) 425-3815 fax (703) 425-3814

We look forward to hearing from you!

SHELL	A	B	C	D	E	F	G	H	I
8	828	554	368	120	1215	446	052	087	3/4-20 UNEF
10	954	719	585	120	1215	446	052	087	3/4-20 UNEF
12	1047	812	664	120	1215	446	062	087	3/4-20 UNEF
14	1141	905	743	120	1215	446	062	087	1-20 UNEF
16	1234	998	1115	120	1215	446	062	087	1-20 UNEF
18	1328	1092	1208	120	1215	446	062	087	1-20 UNEF
20	1423	1185	1301	120	1215	446	062	087	1-20 UNEF
22	1518	1278	1394	120	1215	446	062	087	1-20 UNEF
24	1708	1375	1491	120	1215	446	062	087	1-20 UNEF



A Woman Owned Small Business, CAGE Code 07BG6

Copyright © 2008 Allen Electric Connector Sales, Inc. All Rights Reserved.



8	.4375-28	0.827	21.00	0.594	15.09	.120	3.05	.370	.940	.474	12.04	.322	8.18	.069	1.75	.308	7.83	.447	11.35
10	.5625-24	0.953	24.2	0.719	18.26	.120	3.05	.370	.940	.591	15.01	.322	8.18	.069	1.75	.308	7.83	.447	11.35
12	.6875-24	1.047	26.6	0.812	20.62	.120	3.05	.370	.940	.751	19.08	.322	8.18	.069	1.75	.308	7.83	.447	11.35
14	.8125-20	1.141	28.98	0.906	23.01	.120	3.05	.370	.940	.876	22.25	.322	8.18	.069	1.75	.308	7.83	.447	11.35
16	.9375-20	1.234	31.34	0.969	24.61	.120	3.05	.370	.940	1.001	25.43	.322	8.18	.069	1.75	.308	7.83	.447	11.35
18	1.0625-18	1.327	33.7	1.062	26.97	.120	3.05	.370	.940	1.126	28.60	.322	8.18	.069	1.75	.308	7.83	.447	11.35
20	1.1875-18	1.453	36.9	1.156	29.36	.120	3.05	.370	.940	1.251	31.78	.322	8.18	.069	1.75	.308	7.83	.447	11.35
22	1.3125-18	1.578	40.08	1.25	31.75	.120	3.05	.370	.940	1.376	34.95	.322	8.18	.069	1.75	.308	7.83	.447	11.35
24	1.4375-18	1.703	43.26	1.375	34.93	.147	3.73	.370	.940	1.501	38.31	.322	8.18	.069	1.75	.308	7.83	.447	11.35

[MIL-DTL-38999 Insert and Contact Identification](#)

[MIL-DTL-38999 Insert Arrangements](#)

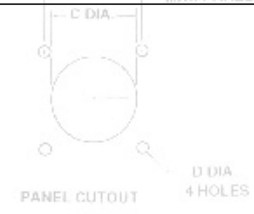
[MIL-DTL-38999 Contacts, Tooling, Wire Sizes, Sealing Plugs](#)

[Series II Polarization & Shell Keying](#)

[Series II Panel Cut-Out Dimensions](#)

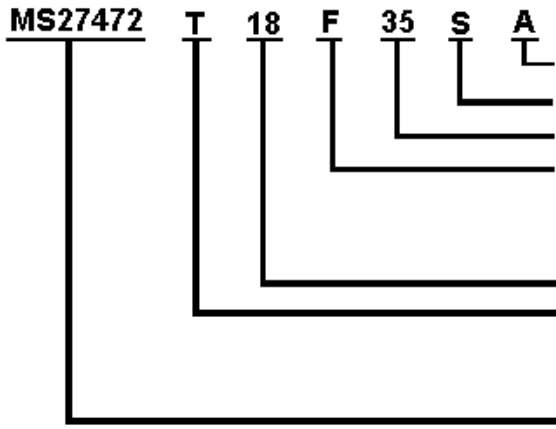
[Series I & II Strain Reliefs](#)

Shell	A	B	C	D	E	F	G	H	J
8	.820	.564	.120	1.215	.446	.052	.087	3/16-20 UNF	
10	.954	.719	.120	1.215	.446	.062	.087	3/16-20 UNF	
12	1.047	.812	.120	1.215	.446	.062	.087	3/16-20 UNF	
14	1.141	.906	.120	1.215	.446	.062	.087	3/16-20 UNF	
16	1.234	.969	.120	1.215	.446	.062	.087	3/16-20 UNF	
18	1.327	1.062	.120	1.215	.446	.062	.087	3/16-20 UNF	
20	1.453	1.156	.120	1.215	.446	.062	.087	3/16-20 UNF	
22	1.578	1.25	.120	1.215	.446	.062	.087	3/16-20 UNF	
24	1.703	1.375	.147	1.215	.446	.062	.087	3/16-20 UNF	



Shell	A	B
8	.820	.564
10	.954	.719
12	1.047	.812
14	1.141	.906
16	1.234	.969
18	1.327	1.062
20	1.453	1.156
22	1.578	1.25
24	1.703	1.375

### MILITARY PART NUMBERING SYSTEM



- Polarization (not required for normal)**
- Contact Style (P for Pin, S for Socket)**
- Insert Arrangement (Refer to MIL-C-38999 Insert Arrangements)**
- Finish:**
  - B= Aluminum, olive drab cadmium over nickel -65 C to +175C**
  - C= Aluminum, Anodic (Non-Conductive) -65 C to +200 C**
  - F= Aluminum, electroless nickel, -65 C to +200 C**
- Shell Size: (even numbers only, 8 thru 24)**
- Class:**
  - T= Environmental with accessory threads and teeth (with exception of box mount version)**
  - E= Environmental (box mount versions only)**
- MS Number**
  - MS27472= wall mount flange receptacle**
  - MS27473= standard plug**
  - MS27474= jam nut mount receptacle**
  - MS27499= box mount receptacle**
  - MS27508= box mount flange receptacle**
  - MS27497= back panel wall mount receptacle**
  - MS27484= RFI Plug**
  - MS27513= box mount flange long grommet receptacle**

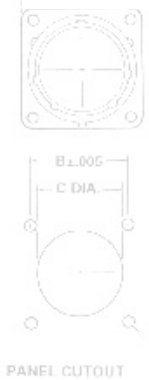
For pricing and availability, please fill out our RFQ form



If you need any other information, please [E-Mail aecs@aecsinc.com](mailto:aecs@aecsinc.com)



phone (703) 425-3815 fax (703) 425-3814

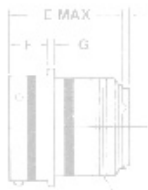


Shell	A	B
8	.820	.564
10	.954	.719
12	1.047	.812
14	1.141	.906
16	1.234	.969

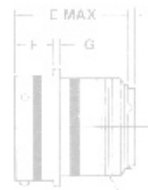
We look forward to hearing from you!

20	1.418	1.250	1.485	1.20	1.275	1/2	094	212	1.7/16-18 UNF
22	1.578	1.410	1.485	1.20	1.275	1/2	094	212	1.7/16-18 UNF
24	1.708	1.375	1.615	1.47	1.275	1/4	094	212	1.7/16-18 UNF

20	1.418	1.160							
22	1.578	1.410							
24	1.708	1.375							



1.00  
.190



1.00  
.190

A Woman Owned Small Business, CAGE Code 07BG6



H —  
MAX PANEL

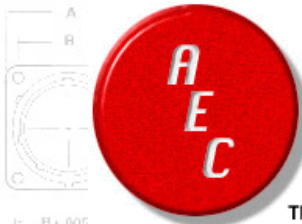
J THREAD

Copyright © 2008 Allen Electric Connector Sales, Inc. All Rights Reserved.

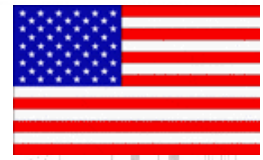


H —  
MAX PANEL

J THREAD

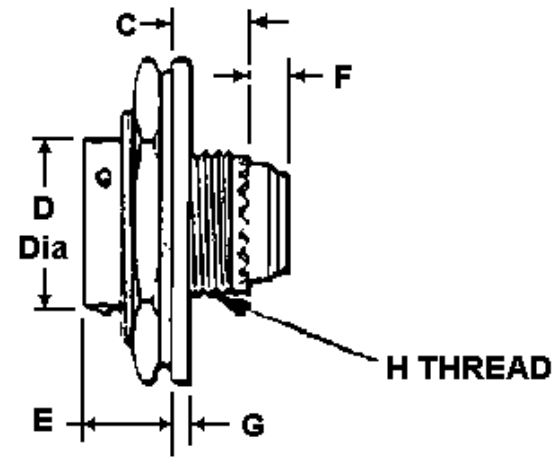
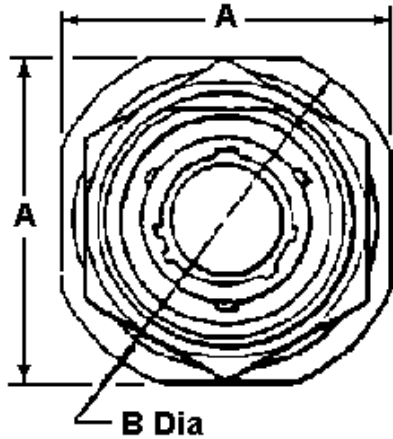


# Allen Electric Connector Sales, inc.



## MS27474 SERIES II JAM NUT RECEPTACLE

SHELL SIZE	A MAX	B DIA	C	D DIA	E	F	G	H THREAD
8	1.266	1.391	0.317	8.05	0.474	11.25	.140	.4375-28
10	1.389	1.515	0.317	8.05	0.591	11.25	.140	.5625-24
12	1.515	1.641	0.317	8.05	0.751	11.25	.140	.6875-24
14	1.641	1.766	0.317	8.05	0.876	11.25	.140	.8125-20
16	1.795	1.954	0.317	8.05	1.001	11.25	.140	.9375-20
18	1.905	2.031	0.317	8.05	1.126	11.25	.140	1.0625-18
20	2.031	2.157	0.291	7.39	1.251	11.91	.140	1.1875-18
22	2.156	2.281	0.291	7.39	1.376	11.91	.140	1.3125-18
24	2.279	2.405	0.291	7.39	1.501	11.91	.140	1.4375-18



SHELL SIZE	A MAX		B DIA		C		D DIA		E		F		G		H THREAD CLASS 2A UNEF
	INCH	MM	INCH	MM	INCH	MM	INCH	MM	INCH	MM	INCH	MM	INCH	MM	
8	1.266	32.16	1.391	35.33	0.317	8.05	0.474	12.04	.443	11.25	.140	3.56	.104	2.64	.4375-28
10	1.389	35.28	1.515	38.48	0.317	8.05	0.591	15.01	.443	11.25	.140	3.56	.104	2.64	.5625-24
12	1.515	38.48	1.641	41.68	0.317	8.05	0.751	19.08	.443	11.25	.140	3.56	.104	2.64	.6875-24
14	1.641	41.86	1.766	44.86	0.317	8.05	0.876	22.25	.443	11.25	.140	3.56	.104	2.64	.8125-20
16	1.795	45.59	1.954	49.63	0.317	8.05	1.001	25.43	.443	11.25	.140	3.56	.104	2.64	.9375-20
18	1.905	48.39	2.031	51.59	0.317	8.05	1.126	28.6	.443	11.25	.140	3.56	.104	.264	1.0625-18
20	2.031	51.59	2.157	54.78	0.291	7.39	1.251	31.78	.469	11.91	.140	3.56	.104	2.64	1.1875-18
22	2.156	54.94	2.281	57.94	0.291	7.39	1.376	34.95	.469	11.91	.140	3.56	.104	2.64	1.3125-18
24	2.279	57.89	2.405	61.09	0.291	7.39	1.501	38.13	.469	11.91	.140	3.56	.104	2.64	1.4375-18

- [MIL-DTL-38999 Insert and Contact Identification](#)
- [MIL-DTL-38999 Insert Arrangements](#)
- [MIL-DTL-38999 Contacts, Tooling, Wire Sizes, Sealing Plugs](#)
- [Series II Polarization & Shell Keying](#)
- [Series II Panel Cut-Out Dimensions](#)
- [Series I & II Strain Reliefs](#)

# MILITARY PART NUMBERING SYSTEM

**MS27474**

**T**

**22**

**F**

**35**

**P**

**A**

- Polarization (not required for normal)**
- Contact Style (P for Pin, S for Socket)**
- Insert Arrangement (Refer to MIL-C-38999 Insert Arrangements)**
- Finish:**
  - B= Aluminum, olive drab cadmium over nickel -65 C to +175C**
  - C= Aluminum, Anodic (Non-Conductive) -65 C to +200 C**
  - F= Aluminum, electroless nickel, -65 C to +200 C**
- Shell Size: (even numbers only, 8 thru 24)**
- Class:**
  - T= Environmental with accessory threads and teeth (with exception of box mount version)**
  - E= Environmental (box mount versions only)**
- MS Number**
  - MS27472= wall mount flange receptacle**
  - MS27473= standard plug**
  - MS27474= jam nut mount receptacle**
  - MS27499= box mount receptacle**
  - MS27508= box mount flange receptacle**
  - MS27497= back panel wall mount receptacle**
  - MS27484= RFI Plug**
  - MS27513= box mount flange long grommet receptacle**



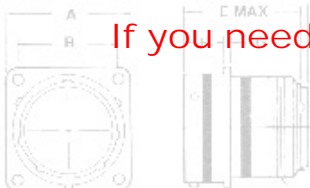
For pricing and availability, please fill out our RFO form



10	954	719	685	120	1.215	446	062	087	58-24 UNEF
12	1047	812	864	120	1.215	446	062	087	3/4-20 UNEF
14	1141	906	869	120	1.215	446	062	087	7/8-20 UNEF
16	1234	1002	1216	120	1.215	446	062	087	1 1/16-18 UNF
20	1443	1150	1365	120	1.275	522	094	212	1 3/16-18 UNF
22	1578	1259	1486	120	1.275	522	094	212	1 5/16-18 UNF
24	1703	1375	1615	127	1.275	522	094	212	1 7/16-18 UNF



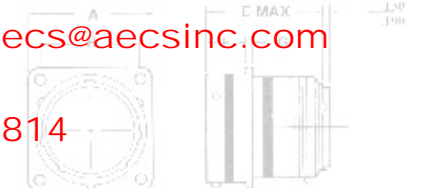
10	954	719	685	120	1.215	446	062	087	58-24 UNEF
12	1047	812	864	120	1.215	446	062	087	3/4-20 UNEF
14	1141	906	869	120	1.215	446	062	087	7/8-20 UNEF
16	1234	1002	1216	120	1.215	446	062	087	1 1/16-18 UNF
20	1443	1150	1365	120	1.275	522	094	212	1 3/16-18 UNF
22	1578	1259	1486	120	1.275	522	094	212	1 5/16-18 UNF
24	1703	1375	1615	127	1.275	522	094	212	1 7/16-18 UNF



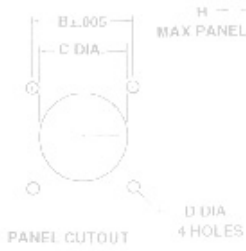
If you need any other information, please [E-Mail aecs@aecsinc.com](mailto:aecs@aecsinc.com)



phone (703) 425-3815 fax (703) 425-3814



We look forward to hearing from you!



SHELL SIZE	A MAX	B ±.005	C ±.010	J THREAD	D DIA	4 HOLES
8	828	564	5			
10	954	719	5			
12	1047	812	5			
14	1141	906	869	120	1.215	446 062 087 7/8-20 UNEF
16	1234	1002	1216	120	1.215	446 062 087 1 1/16-18 UNF
20	1443	1150	1365	120	1.275	522 094 212 1 3/16-18 UNF
22	1578	1259	1486	120	1.275	522 094 212 1 5/16-18 UNF
24	1703	1375	1615	127	1.275	522 094 212 1 7/16-18 UNF



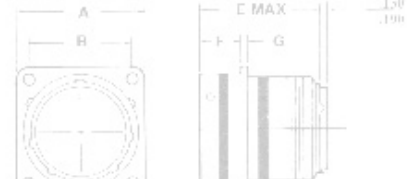
SHELL SIZE	A MAX	B ±.005	C ±.010	J THREAD	D DIA	4 HOLES
8	828	564	5			
10	954	719	5			
12	1047	812	5			
14	1141	906	869	120	1.215	446 062 087 7/8-20 UNEF
16	1234	1002	1216	120	1.215	446 062 087 1 1/16-18 UNF
20	1443	1150	1365	120	1.275	522 094 212 1 3/16-18 UNF
22	1578	1259	1486	120	1.275	522 094 212 1 5/16-18 UNF
24	1703	1375	1615	127	1.275	522 094 212 1 7/16-18 UNF

A Woman Owned Small Business, CAGE Code 07BG6



	INCH	MM	INCH	MM	INCH	MM	INCH	MM	INCH	MM	INCH	MM	INCH	MM	INCH	MM	INCH	MM
8	0.827	21.00	0.594	15.09	.120	3.05	.312	7.92	.474	12.04	.322	8.18	.069	1.75	.250	6.35	.447	11.35
10	0.953	24.2	0.719	18.26	.120	3.05	.312	7.92	.591	15.01	.322	8.18	.069	1.75	.250	6.35	.447	11.35
12	1.047	26.6	0.812	20.62	.120	3.05	.312	7.92	.751	19.08	.322	8.18	.069	1.75	.250	6.35	.447	11.35
14	1.141	28.98	0.906	23.01	.120	3.05	.312	7.92	.876	22.25	.322	8.18	.069	1.75	.250	6.35	.447	11.35
16	1.234	31.34	0.969	24.61	.120	3.05	.312	7.92	1.001	25.43	.322	8.18	.069	1.75	.250	6.35	.447	11.35
18	1.327	33.7	1.062	26.97	.120	3.05	.312	7.92	1.126	28.60	.322	8.18	.069	1.75	.250	6.35	.447	11.35
20	1.453	36.9	1.156	29.36	.120	3.05	.312	7.92	1.251	31.78	.322	8.18	.069	1.75	.250	6.35	.447	11.35
22	1.578	40.08	1.25	31.75	.120	3.05	.312	7.92	1.376	34.95	.322	8.18	.069	1.75	.250	6.35	.447	11.35
24	1.703	43.26	1.375	34.93	.147	3.73	.312	7.92	1.501	38.13	.322	8.18	.069	1.75	.250	6.35	.447	11.35

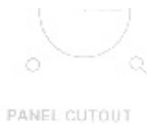
- [MIL-DTL-38999 Insert and Contact Identification](#)
- [MIL-DTL-38999 Insert Arrangements](#)
- [MIL-DTL-38999 Contacts, Tooling, Wire Sizes, Sealing Plugs](#)
- [Series II Polarization & Shell Keying](#)
- [Series II Panel Cut-Out Dimensions](#)
- [Series I & II Strain Reliefs](#)



### MILITARY PART NUMBERING SYSTEM

**MS27499 T 18 F 35 P B**

- Polarization** (not required for normal)
- Contact Style** (P for Pin, S for Socket)
- Insert Arrangement** (Refer to MIL-C-38999 Insert Arrangements)
- Finish:**
  - B= Aluminum, olive drab cadmium over nickel -65 C to +175C**
  - C= Aluminum, Anodic (Non-Conductive) -65 C to +200 C**
  - F= Aluminum, electroless nickel, -65 C to +200 C**
- Shell Size:** (even numbers only, 8 thru 24)
- Class:**
  - T= Environmental with accessory threads and teeth (with exception of box mount version)**
  - E= Environmental (box mount versions only)**
- MS Number**
  - MS27472= wall mount flange receptacle**
  - MS27473= standard plug**
  - MS27474= jam nut mount receptacle**
  - MS27499= box mount receptacle**
  - MS27508= box mount flange receptacle**
  - MS27497= back panel wall mount receptacle**
  - MS27484= RFI Plug**
  - MS27513= box mount flange long grommet receptacle**



For pricing and availability, please fill out our RFQ form



	INCH	MM	INCH	MM	INCH	MM	INCH	MM	INCH	MM	INCH	MM	INCH	MM	INCH	MM	INCH	MM
8	0.820	55.4	56.8	120	1.215	446	652	687	1.516-18 UNF									
10	95.4	71.9	68.5	120	1.215	446	652	687	1.516-24 UNF									
12	1.047	81.2	86.4	120	1.215	446	652	687	1.516-20 UNF									
14	1.134	88.9	111.5	120	1.215	446	652	687	1.516 UNF									
16	1.234	100.2	123.6	120	1.215	446	652	687	1.516-18 UNF									
20	1.453	136.5	136.5	120	1.275	507	694	712	1.316-18 UNF									
22	1.578	140.5	140.5	120	1.275	507	694	712	1.516-18 UNF									
24	1.703	137.5	161.5	127	1.275	507	694	712										

	INCH	MM
8	0.820	
10	95.4	
12	1.047	
14	1.134	
16	1.234	
18	1.328	
20	1.453	
22	1.578	
24	1.703	

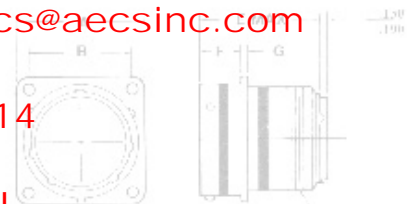


If you need any other information, please **E-Mail** [aecs@aecsinc.com](mailto:aecs@aecsinc.com)



phone (703) 425-3815 fax (703) 425-3814

We look forward to hearing from you!





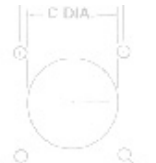
PANEL CUTOUT

D DIA.  
4 HOLES

SHELL SIZE	A MAX	B
8	820	554
10	954	719
12	1047	812
14	1141	906
16	1234	1000
18	1328	1094
20	1422	1188
22	1516	1282
24	1610	1376



J	EAD 2A
1	20 UNF
2	14 UNEF
3	3/4-20 UNEF
4	2 1/8-20 UNF
5	1-20 UNEF
6	1 1/16-18 UNF
7	1 5/16-18 UNF
8	1 7/16-18 UNF



PANEL CUTOUT

D DIA.  
4 HOLES

SHELL SIZE	A MAX
8	820
10	954
12	1047
14	1141
16	1234
18	1328
20	1422
22	1516
24	1610

A Woman Owned Small Business, CAGE Code 07BG6

Copyright © 2008 Allen Electric Connector Sales, Inc. All Rights Reserved.



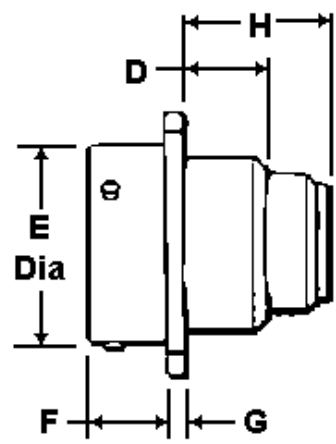
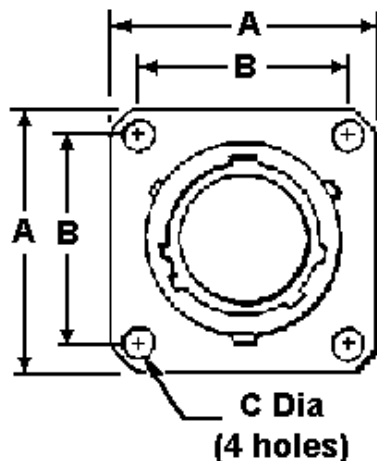
# Allen Electric Connector Sales, Inc.



## MS27513 SERIES II LONG GROMMET BOX MOUNT FLANGE RECEPTACLE

R	.628	.564	.568	.120	1.215	.446	.052	.087	5/32 UNF
10	.954	.719	.685	.120	1.215	.446	.052	.087	5/32 UNEF
12	1.047	.812	.664	.120	1.215	.446	.052	.087	3/4-20 UNEF

A	MAX	.628
B		.564
C		.120
D		1.215
E		.446
F		.052
G		.087
H		5/32 UNF
J		3/4-20 UNEF



SHELL SIZE	A MAX		B NOMINAL		C NOM DIA		D MAX		E MAX DIA		F MAX		G MAX		H MAX	
	INCH	MM	INCH	MM	INCH	MM	INCH	MM	INCH	MM	INCH	MM	INCH	MM	INCH	MM
8	.827	21.00	.594	15.09	.120	3.05	.312	7.92	.474	12.04	.322	8.18	.069	13.11	.516	13.11
10	.953	24.20	.719	18.26	.120	3.05	.312	7.92	.591	15.01	.322	8.18	.069	13.11	.516	13.11
12	1.047	26.60	.812	20.62	.120	3.05	.312	7.92	.751	19.08	.322	8.18	.069	13.11	.516	13.11
14	1.141	28.58	.906	23.01	.120	3.05	.312	7.92	.876	22.25	.322	8.18	.069	13.11	.516	13.11
16	1.234	31.34	.969	24.61	.120	3.05	.312	7.92	1.001	25.43	.322	8.18	.069	13.11	.516	13.11
18	1.327	33.70	1.062	26.97	.120	3.05	.312	7.92	1.126	28.60	.322	8.18	.069	13.11	.516	13.11
20	1.453	36.90	1.156	29.36	.120	3.05	.312	7.92	1.251	31.78	.322	8.18	.069	13.11	.516	13.11
22	1.578	40.08	1.250	31.75	.120	3.05	.312	7.92	1.376	34.95	.322	8.18	.069	13.11	.516	13.11
24	1.703	43.26	1.375	34.93	.147	3.73	.312	7.92	1.501	38.13	.322	8.18	.069	13.11	.516	13.11

- [MIL-DTL-38999 Insert and Contact Identification](#)
- [MIL-DTL-38999 Insert Arrangements](#)
- [MIL-DTL-38999 Contacts, Tooling, Wire Sizes, Sealing Plugs](#)
- [Series II Polarization & Shell Keying](#)
- [Series II Panel Cut-Out Dimensions](#)
- [Series I & II Strain Reliefs](#)

# MILITARY PART NUMBERING SYSTEM

**MS27513**

**T**

**18**

**F**

**35**

**S**

**C**

- Polarization (not required for normal)
- Contact Style (P for Pin, S for Socket)
- Insert Arrangement (Refer to MIL-C-38999 Insert Arrangements)
- Finish:
  - B= Aluminum, olive drab cadmium over nickel -65 C to +175C
  - C= Aluminum, Anodic (Non-Conductive) -65 C to +200 C
  - F= Aluminum, electroless nickel, -65 C to +200 C
- Shell Size: (even numbers only, 8 thru 24)
- Class:
  - T= Environmental with accessory threads and teeth (with exception of box mount version)
  - E= Environmental (box mount versions only)
- MS Number
  - MS27472= wall mount flange receptacle
  - MS27473= standard plug
  - MS27474= jam nut mount receptacle
  - MS27499= box mount receptacle
  - MS27508= box mount flange receptacle
  - MS27497= back panel wall mount receptacle
  - MS27484= RFI Plug
  - MS27513= box mount flange long grommet receptacle

For pricing and availability, please fill out our RFQ form



If you need any other information, please [E-Mail aecs@aecsinc.com](mailto:aecs@aecsinc.com)

phone (703) 425-3815 fax (703) 425-3814

We look forward to hearing from you!

SHELL SIZE	A MAX	B ±.005	C ±.005	D ±.005	E MAX	F ±.015	G ±.010	H (MAX)	J THREAD
8	.828	.564	.568	.120	1.215	.446	.052	.087	3/4-20 UNEF
10	1.047	.672	.664	.120	1.215	.446	.052	.087	7/8-20 UNEF
12	1.147	.906	.889	.120	1.215	.446	.067	.087	7/8-20 UNEF
14	1.247	1.056	1.039	.120	1.215	.446	.067	.087	1-20 UNEF
16	1.347	1.156	1.139	.120	1.275	.522	.094	.212	1-20 UNEF
18	1.447	1.256	1.239	.120	1.275	.522	.094	.212	1-20 UNEF
20	1.443	1.150	1.365	.120	1.275	.522	.094	.212	1-8 UNEF
22	1.578	1.250							1-8 UNEF
24	1.703	1.375							1-8 UNEF



A Woman Owned Small Business, CAGE Code 07BG6